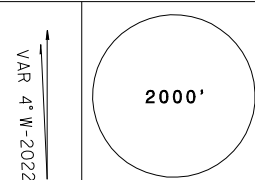
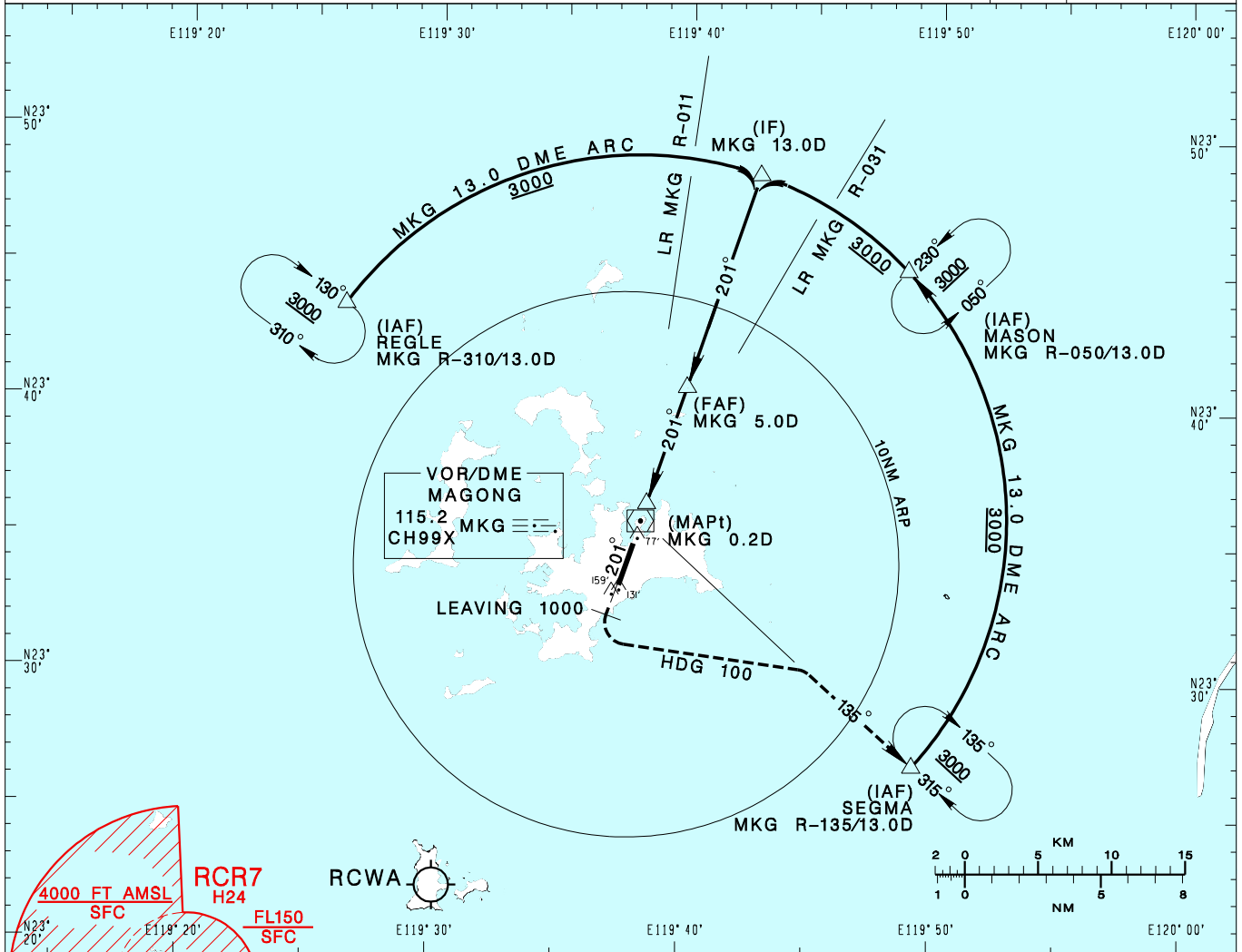


澎湖機場
PENGHU AD

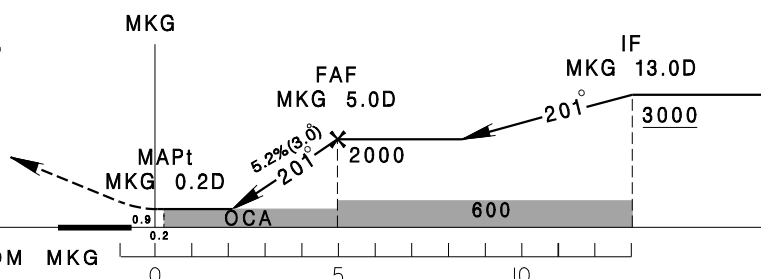
RCQC
VOR RWY20

KAOHSIUNG APP 128.1 234.8	MAGONG TWR 118.3 236.6	ATIS 127.05	 <p>VAR 4° W-2022</p> <p>2000'</p> <p>MSA ARP 25NM</p>		
Apt Elev: 103'		Rwy20 THR Elev: 46'		Trans Level: FL130	Trans Alt: 11,000'
BEARINGS ARE MAGNETIC; DISTANCES ARE NAUTICAL MILES; ELEVATIONS, HEIGHTS IN FEET					



DIST to MKG	1.0DME	2.0DME	3.0DME	4.0DME	5.0DME
ADVISORY ALT	700	1010	1330	1650	2000

MISSED APCH:
CLIMB ON MKG R-201 TO 1000,
THEN TURN LEFT HDG 100 TO
TRACK MKG R-135 TO SEGMA,
CLIMB TO 3000 AND HOLD.



MINIMA (OCA IN FT, VIS IN M, OCH IN FT)

CATEGORY	A	B	C	D	NOTE CIVIL AIRCRAFT USE EAST TRAFFIC PATTERN. * DME REQUIRED
STRAIGHT IN	330/800 RVR 750 284				
STRAIGHT IN (ALS OUT)	330/1600 284				
CIRCLING	620/1900 517	620/2800 517	710/3700 607	800/4600 697	

CHANGES: UPDATE MAG VAR AND TRACK.